

T4

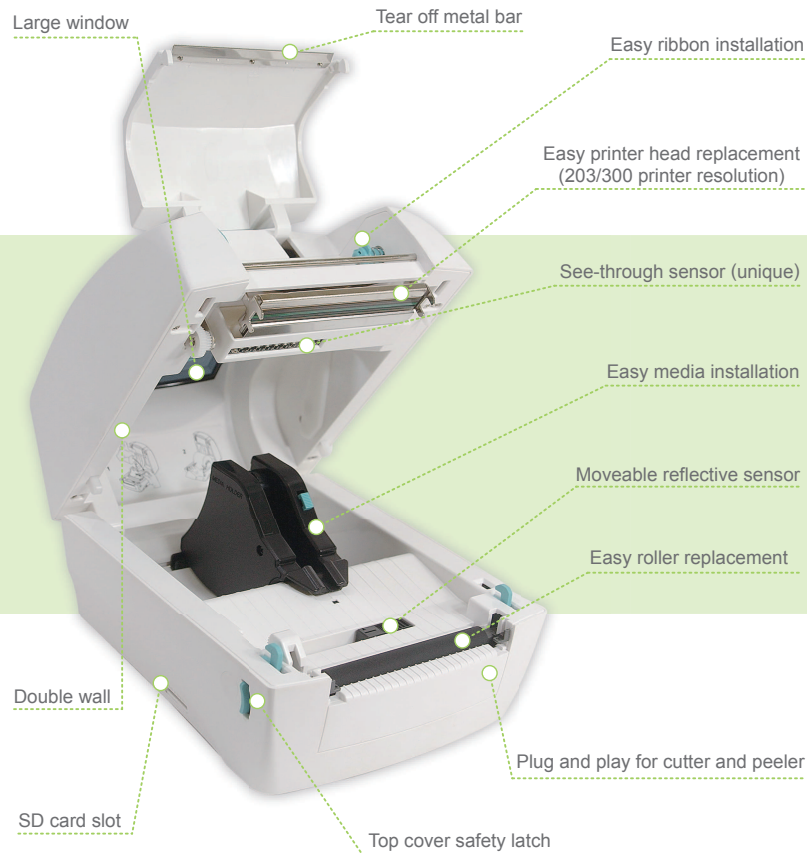
Printer Overview

THE ONE YOU CAN RELY ON

Mechanical features



Graphic LCD

4 function buttons +
flash indicationSee-through sensor
(Auto detection)

SD card slot (Up to 4GB)



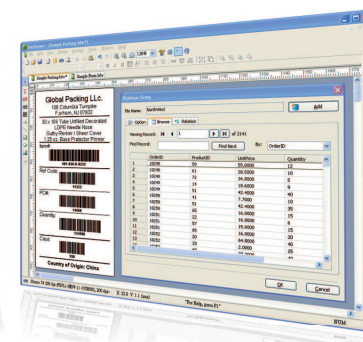
Full communication ports



Easy roller replacement

Software features

- Freeware Software
- Professional Edition Features (Database and 2-D Barcode)
- Multilingual Interface
- Support labels and forms making
- A full range of tools (PrinterTool, FWTool, DriverSetup...)

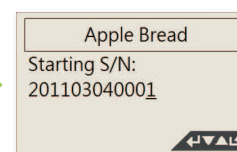


Multi-function stand-alone operation Features

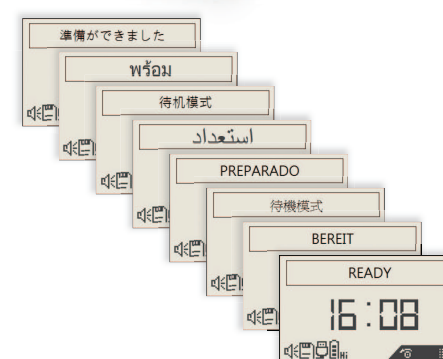
- No PC Operating.
- Easy Forms Update and Easy Data Storage via SD card
- Variety of external devices connections (USB-KeyBoard, USB-Scanner, Scale, Counter...)
- BarDrawer easily edit form
- Convenient form operation
- Multilingual LCD display



Form List



Form Content



Multilingual LCD Display

Specifications

CPU AND MEMORY

- CPU : 32-bit CPU
- MEMORY : 8MB SDRAM, 4MB Flash ROM, SD slot (up to 4GB)
Flash ROM expandable to 8MB

PRINT

- RESOLUTION : 203 dpi/300 dpi
- PRINT MODE : Direct Thermal/Thermal Transfer
- PRINT SPEED : 203 dpi 1 to 4 ips/300 dpi 1 to 3 ips
- MAX. PRINT LENGTH : 150 inches
- PRINT WIDTH : 4.1" (104mm)
- BARCODE :
 - 1D : Code39, Code93, Code128 UCC, Code128 auto, Codabar, EAN8, EAN13, Interleaved 2 of 5, UCC/EAN 128, UPC A, UPC E, UPC Interleaved 2 of 5, Code11
 - 2D : Data Matrix, MaxiCode, PDF417, QR code
- FONT :
 - 5 internal expandable bitmap fonts (alpha-numeric)
 - 2 internal expandable bitmap fonts (numeric only)
 - Downloadable soft font
 - 4 directions : 0, 90, 180, 270 degrees
- IMAGE : PCX, Direct binary graphic

SENSOR TYPE : Moveable reflective and see-through sensor,
Label sensor, Cover open sensor, ribbon sensor

DISPLAY : Backlight LCD display 128x64 dots

CONTROL PANEL : 4 multi-functional keys, 4 status LED light, 1 error LED light

MEDIA

- WIDTH : 0.59"~4.33"(15mm~110mm)
- MEDIA ROLL DIAMETER : ID-1" (25.4mm)/OD-Max. 5"(127mm)
- MEDIA THICKNESS : 0.002" (0.06mm) to 0.0075" (0.2mm)
- MEDIA TYPE : Continuous, die-cut, tag, fan-fold, black mark

RIBBON

- WIDTH : 1.0" (25.4mm) to 4.3" (110mm)
- RIBBON ROLL DIAMETER : ID - 0.5"/OD - 1.535"
- RIBBON LENGTH : Max. length - 100M
- RIBBON TYPE : Wax, wax/resin, resin

INTERFACE : Serial, USB master and slave, Ethernet 10/100Mbps (option)

POWER : Switching power adapter - Input : 100 to 240V/Output : 24V

AUDIO : Beep sound when error occurs

OPTION : Peeler kit, Cutter, Ethernet module, Stacker

OPERATING TEMPERATURE : 5°C to 45°C(40°F to 112.9°F)

PRINTER DIMENSION : 200(W) x 263(L) x 188(H) mm, Weight : 2KG

CERTIFICATION : CE, FCC class B, CCC, CB

Specifications subject to change without notice. Copyright 2010. Sbarco Technology Co., Ltd.
All right reserved. SBARCO is a registered trade mark of Sbarco Technology Co., Ltd.

Option

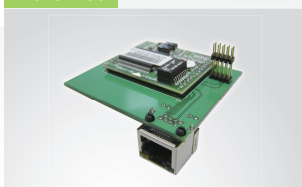
Cutter



Peeler



Ethernet



Stacker



SBARCO

THE ONE YOU CAN RELY ON



THE ONE YOU CAN RELY ON

T4

Modern Shape, Unlimited Applications
Multi-functional label printer



SBARCO Technology Co., Ltd.

Add : 4F., No.115, Lide St., ZhongHe Dist., New Taipei City 23556, Taiwan

Tel : 886-2-3234-3098 Fax : 886-2-3234-1700 Website : www.sbarcotech.com